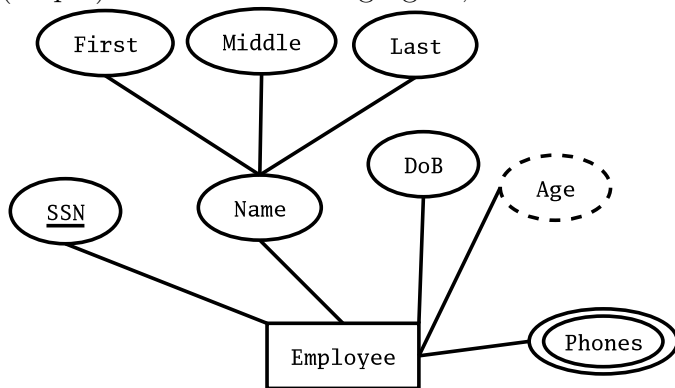


Name: _____

CS3/5153-Fall06:In Class exercise, Chapter 3 (ER Modeling)

1. (4 pts) Entities in an ER diagram are represented by _____
2. (4 pts) Attributes in an ER diagram are represented by _____
3. (4 pts) Relationships in an ER diagram are represented by _____
4. (4 pts) True or False: Relationships can have attributes _____
5. (4 pts) _____ are attributes that can have more than one value for a given instance
6. (20 pts) On the following figure, fill out the table for all the attributes



Attribute	Stored/ Derived	Single-Valued/ Multi-Valued	Simple / Composite
SSN			
Name			
First			
Age			
Phones			

Figure 0: Employees and attributes

7. (10 pts) Complete the ER diagram of figure 1, assuming:
 - A student always majors in exactly one program
 - Zero or more students can major in the same program

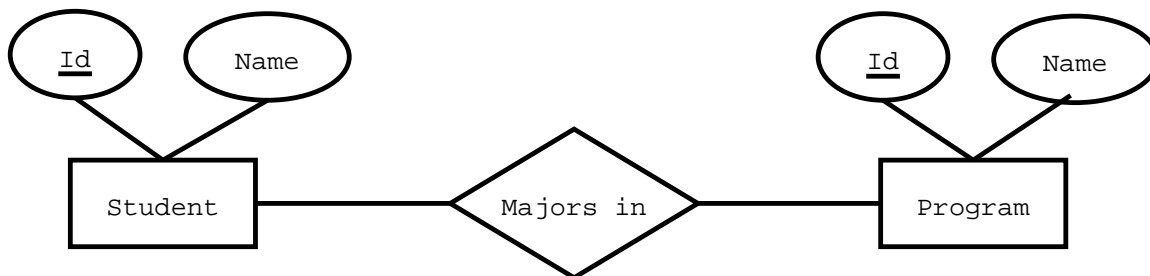


Figure 1: ER diagram: Students and Majors