

- Complete the ER diagram of figure 1, assuming:
 - A student always majors in exactly one program
 - Zero or more students can major in the same program
 - We want to keep track of the date a student declared a major

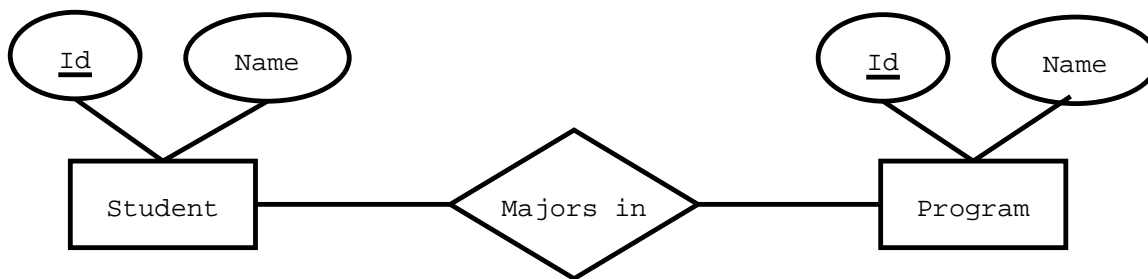


Figure 1: ER diagram: Students and Majors

- Provide an ER-Diagram for the following situation: An AIRPLAINE is owned by one or more COMPANIES. For the plane, we keep their model and serial number (identifier), for the company we keep its Tax ID (identifier), its official name, a list of all other names it does business as, and its address, which we divide into street address, state city and zip code. We also keep track of what percentage of a plane the company owns.
- For the ER diagram of figure , transform it into a relational schema diagram, following the procedure explained in class

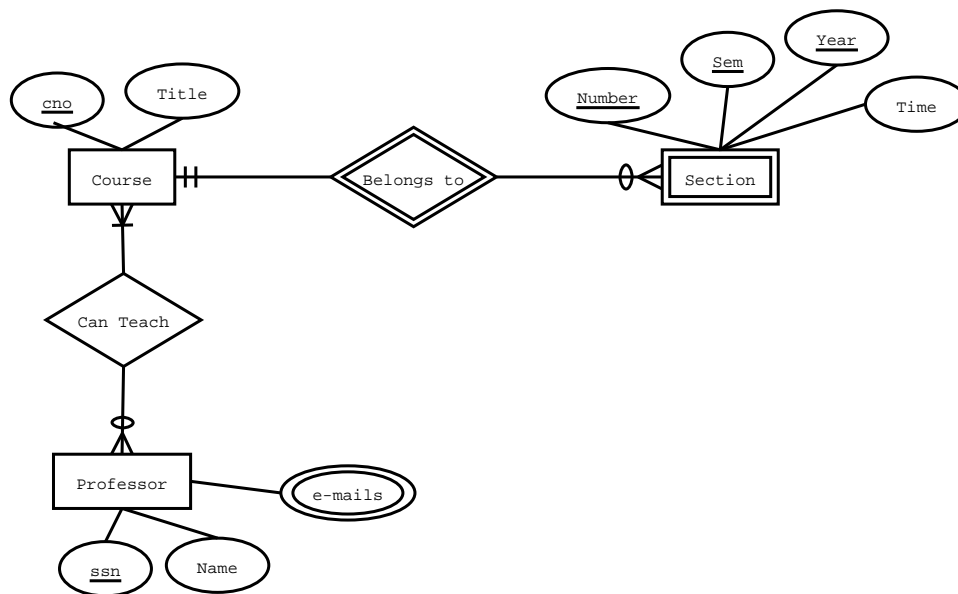


Figure 2: ER diagram to transform to relational schema